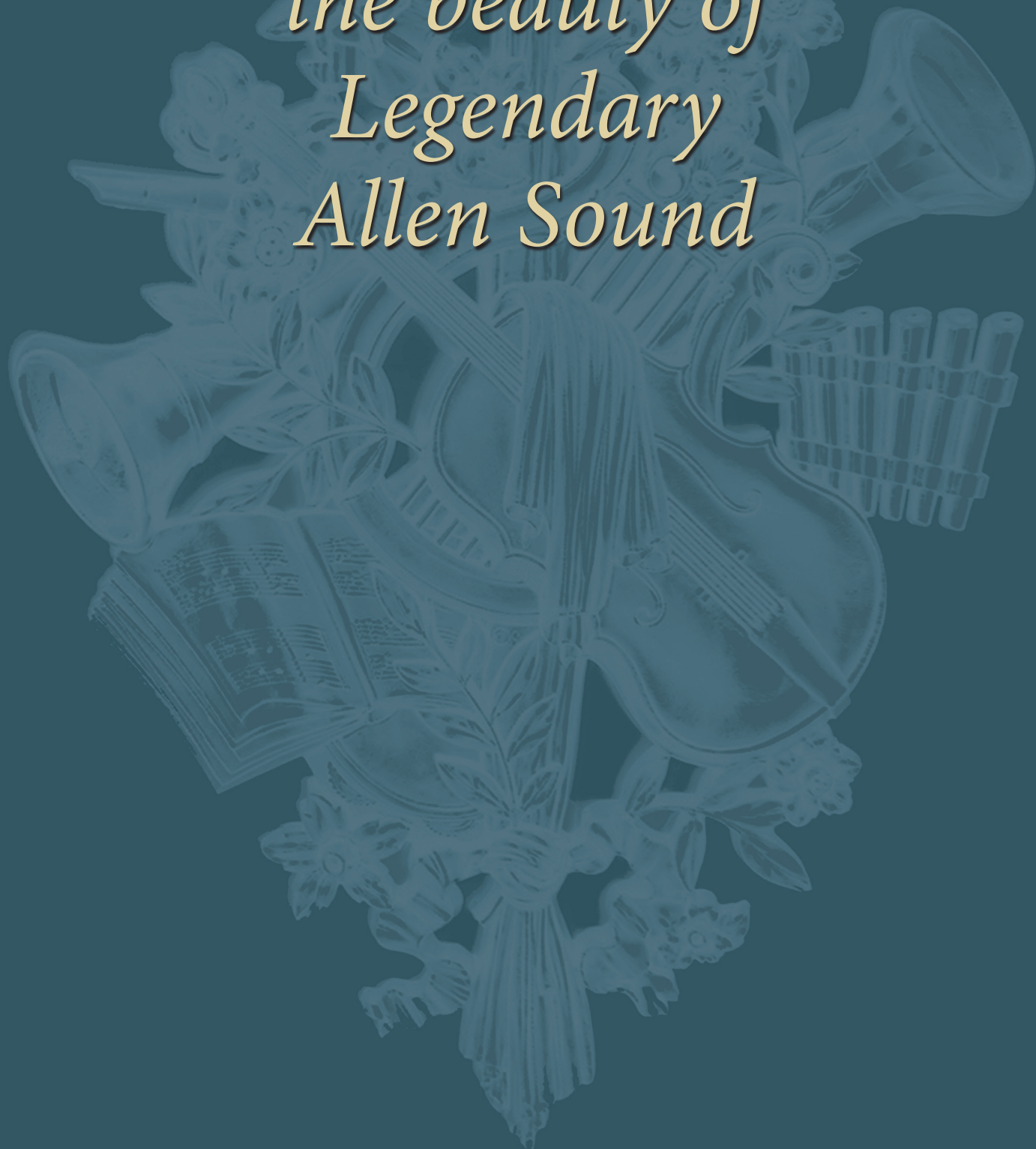

PREMIUM SPEAKERS BY ALLEN

*Bringing to life
the beauty of
Legendary
Allen Sound*



ALLEN SPEAKERS

BRING OUT THE BEST IN ORGAN SOUNDS



Transient response has come to mean the speed of the attack or start-up sounds (the initial “tap” of a cymbal, for example). While this is one part of the “picture,” the speaker industry as a whole has ignored the fact that an important element of transient response is the ability to respond to any very fast peak in a sound. These peaks also occur in the “steady state” or sustained portion of the wave and must be reproduced to make authentic sounding instruments — especially reeds, strings, mixtures, and the wind sounds of any flue pipe. Such sounds are garbled by the typical consumer grade “audiophile” speakers used in the digital organ industry.

Allen Organ Company LLC, with its advanced audio technology and the Herald™ series, faithfully recreate these peaks accurately and at the intensity needed for the true “feel” and majesty of the pipe organ.



Herald HR-50 Speaker

Features

- 1" Ferro-Fluid titanium diaphragm compression driver with matched bi-radial horn
- Passive two-way second order crossover network
- 6" woofer
- Frequency response 100 Hz to 20 kHz
- Sensitivity 94 dB
- Nominal Impedance: 8 ohms
- Finished Cabinet Dimensions:
 - 10" (254 mm) wide
 - 17" (432 mm) high with glides
 - 7 3/4" (190 mm) deep with grille
- Weight: 20 lbs. (9.02 kg) uncrated



Herald HR-100 Speaker

Features

- 1" Ferro-Fluid titanium diaphragm compression driver with matched bi-radial horn
- Passive two-way second order crossover network
- 12" woofer
- Frequency response 40 Hz to 20 kHz
- Sensitivity 94 dB
- Nominal Impedance: 8 ohms
- Utility Cabinet Dimensions - *Finished Cabinet (shown) dimensions differ slightly:*
 - 14 1/2" (368 mm) wide
 - 25 5/8" (651 mm) high with glides
 - 10 19/32" (269 mm) deep with grille
- Weight: 43 lbs. (19.5 kg) uncrated



Herald HR-200 Speaker

Features

- 1" Ferro-Fluid titanium diaphragm compression driver with matched exponential horn
- Passive two-way second order crossover network
- 15" woofer
- Frequency response 30 Hz to 20 kHz
- Sensitivity 94 dB
- Nominal Impedance: 8 ohms
- Utility Cabinet Dimensions - *Finished Cabinet (shown) dimensions differ slightly:*
 - 17 3/8" (441 mm) wide
 - 33 1/4" (844 mm) high with glides
 - 19 1/8" (486 mm) deep with grille
- Weight: 80.5 lbs. (36.5 kg) uncrated



The Herald R-100 Trumpeteer™ Wave Projector

1" Ferro-Fluid titanium diaphragm compression driver with matched bi-radial horn

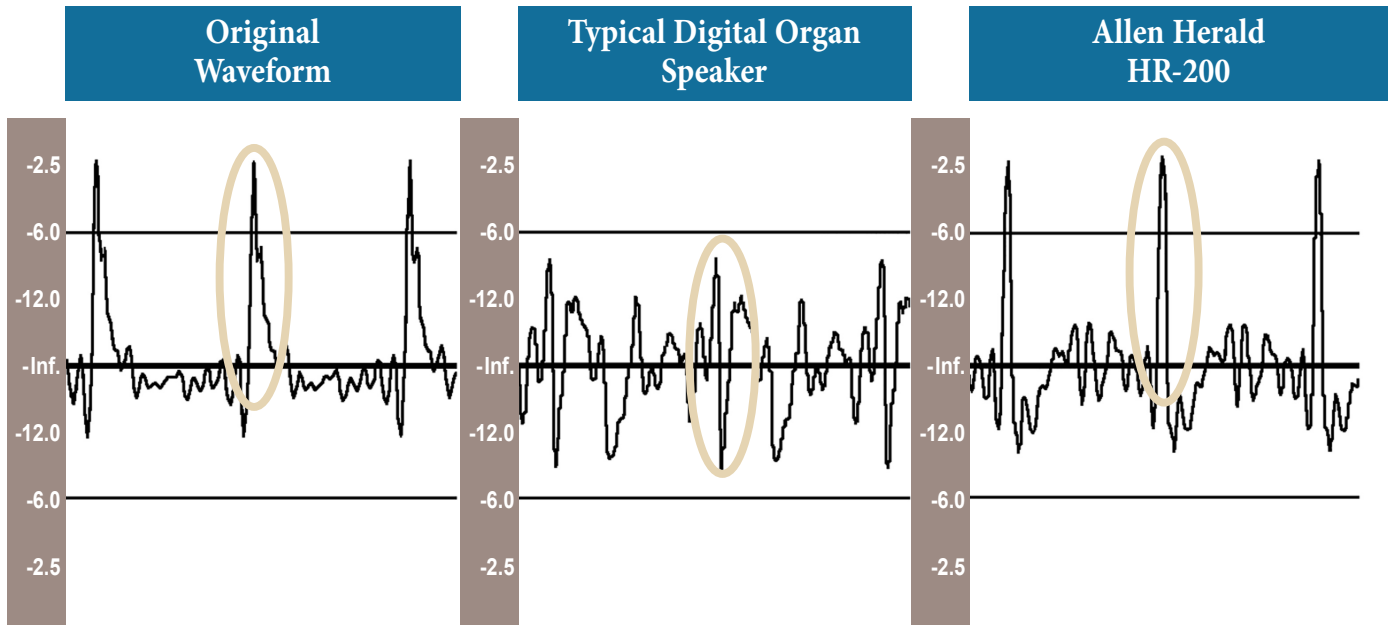


The Herald R-200 Trumpeteer™ Wave Projector

1" Ferro-Fluid titanium diaphragm compression driver with matched exponential horn

ALLEN SPEAKERS

BRING OUT THE BEST IN ORGAN SOUNDS



The waveform shown is C2 of the Great 8' Tromba.

This Allen Herald HR-200 graph shows the waveform as played on an Allen Quantum™ Organ

Allen M-100 Amplifier

Allen amplifiers are designed modularly to provide the most efficient and powerful solution for every application.

Built in-house, each bridged M-100 amplifier module can provide up to 350 watts, or 16 channels, of clean, reliable power from 10 Hz to 20 KHz.



SPEAKER

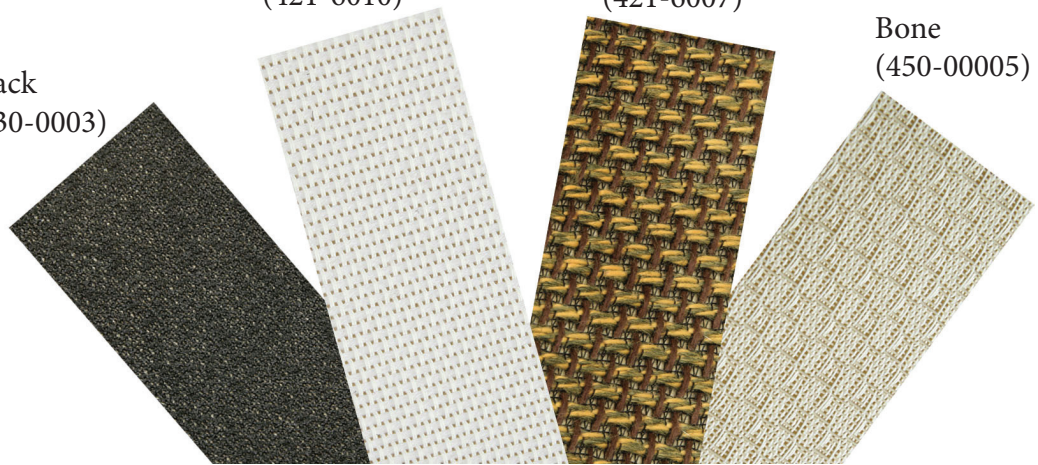
GRILLE CLOTH SELECTIONS

Black
(130-0003)

White
(421-6010)

Brown
(421-6007)

Bone
(450-00005)



BASS SPEAKERS / SUB-WOOFER SYSTEMS

Allen SR-1 Seismic Radiator™ Sub-Woofers System

The Allen SR-1 utilizes a custom-designed 15" high-mass, super-low-frequency, double-magnet active driver. This driver, in conjunction with four passive radiators, extends performance to 14.8 Hz with only 3 dB attenuation. Opposing radiators increase system stability and facilitate high output of these super-low frequencies.

- SR-1 Dimensions (with glides): 44 5/16" (1127 mm) wide; 27 5/16" (695 mm) high; 22 3/8" (569 mm) deep
- SR-1 Weight: 160 lbs. (72.4 kg) uncrated

NOTE: SR-1 Series Cabinets are paintable.

Allen SR-5 Seismic Radiator™ Sub-Woofers System

The SR-5 Seismic Radiator™ employs the same custom-designed 15" high-mass, super-low-frequency, double-magnet active driver used in the SR-1, coupled with 2 passive radiators on each side. Used in a 6th order alignment, system response extends to 16 Hz.

- SR-5 Dimensions (with glides): 20" (508 mm) wide; 33 5/16" (848 mm) high; 19 5/8" (499 mm) deep
- SR-5 Weight: 80 lbs. (36.2 kg) uncrated

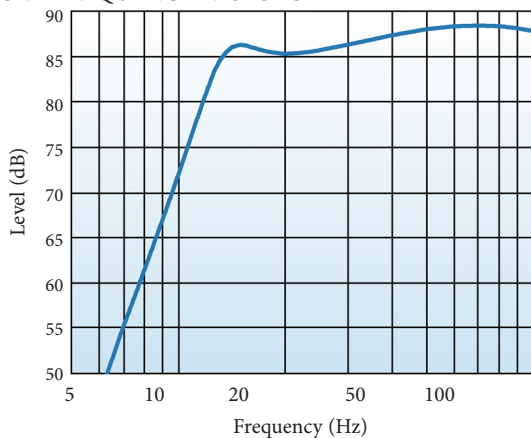
NOTE: SR-5 Series Cabinets are paintable.



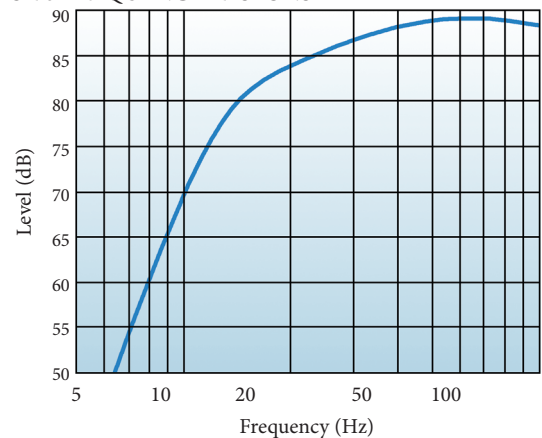
SR-1 Seismic Radiator™

SR-5 Seismic Radiator™

SR-1 FREQUENCY RESPONSE



SR-5 FREQUENCY RESPONSE



Contact
your Allen
representative
for a live
demonstration
of our
outstanding
speakers

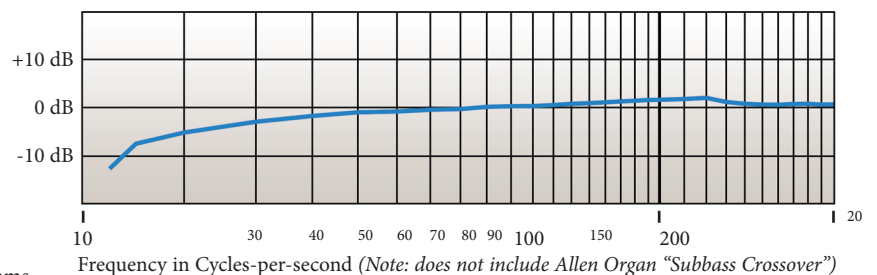


Allen B-20 Bass Speaker

Features

- 12" woofer
- Passive two-way second order crossover network
- Frequency response 30 Hz to 200 Hz
- Sensitivity 94 dB
- Nominal Impedance: 8 ohms
- Utility Cabinet Dimensions - Finished Cabinet (shown) dimensions differ slightly:
17 3/8" (441 mm) wide; 33 1/4" (844 mm) high with glides;
19 1/8" (486 mm) deep with grille
- Weight: 69 lbs. (31.3 kg) uncrated

B-20 FREQUENCY RESPONSE



www.allenorgan.com

150 Locust Street, Macungie, PA 18062 USA
Phone: 610-966-2202 Fax: 610-965-3098 E-mail: aosales@allenorgan.com

Copyright © 2015
AOC PN: 030-00433